

# Inserters Mailing Systems



**Relay® 5000 Folder Inserter**

ments being folded. Add accuracy and further automation with our Relay Integrity Express software, which makes it easy to add barcodes to your documents. The Relay 4500 reads the barcodes to automatically sort and collate variable page-counts to ensure the right documents reach the right recipients.

**RELAY® 5000 MID VOLUME FOLDER INSERTER:** The Relay 5000 brings our flagship tabletop inserting platform to mid volume mailers to bring you increased speed, flexibility and precision. This inserter folds, inserts and seals up to 62,500 a month with throughput of 4,000 envelopes per hour. We know your customers' privacy and security is critical. The optional file control is a proven Pitney Bowes technology version of file-based processing that goes beyond traditional OMR or 1D and 2D barcodes scanning by using a Reference File to control the folding and inserting process. You can track not only what pages are being folded and inserted, but also which specific pages are intended for each individual customer, giving you the capability to recreate a mailing event at a personalized recipient level. Achieve greater levels of accuracy, security and speed with the Relay 5000 inserting system.



**Relay® 7000 Folder Inserter**

**RELAY® 7000 MID TO HIGH VOLUME TABLETOP FOLDER INSERTER:** The Relay 7000 can fold, insert and seal up to 5,400 pieces per hour with a monthly throughput of up to 120,000 envelopes per month. It brings a standard load-on-the-fly high capacity envelope feeder which can hold up to 500 envelopes. Letters and flats can be processed in the same job with counts of up to 25 pages inserted into flat envelopes. Higher volume mailers can add up to 2 high capacity sheet feeders, each with a capacity of up to 2,000 pages. The Relay 7000's optional file control integrity is the proven Pitney Bowes file-based processing technology that goes beyond traditional OMR or 1D and 2D barcodes scanning by using a Reference File to control the folding and inserting process. You can track not only what pages are being folded and inserted, but also which specific pages are intended for each individual customer, giving you the capability to recreate a mailing event at a personalized recipient level.

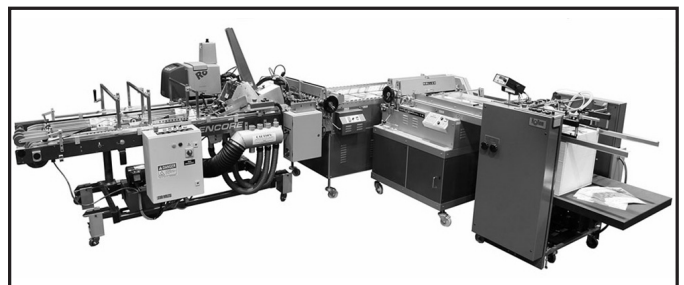
**RELAY® 8000 HIGH VOLUME TABLETOP FOLDER INSERTER:** The Relay 8000 is our flagship tabletop folder inserter. Its enhanced chassis gives you monthly throughput of up to 200,000 envelopes per month. This inserting system can process letters and flats in the same mailing run with speeds of up to 5,400 envelopes per hour. You get



**Relay® 8000 Folder Inserter**

peace of mind knowing your mail is completed accurately with a reliable system. Higher volume mailings are handled with ease by adding up to 2 optional high capacity sheet feeders, each with a capacity of up to 2,000 pages. The Relay 8000's optional file control integrity is the proven Pitney Bowes file-based processing technology that goes beyond traditional OMR or 1D and 2D barcode scanning by using a Reference File to control the folding and inserting process. You can track not only what pages are being folded and inserted, but also which specific pages are intended for each individual customer, giving you the capability to recreate a mailing event at a personalized recipient level.

**CONTACT:** For more information call 877-682-7687 or visit Pitney Bowes at PitneyBowes.com.



**Mailstream Direct Mail Finishing System**

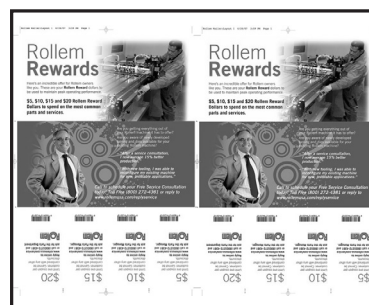
## § Rollem International

**CATEGORY:** Inserter Mailing Systems

**PRODUCT:** Mailstream Direct Mail Finishing System

**COMPANY:** Rollem International, 1650 S Lewis St., Anaheim, CA 92805-6413. Phone: 800-272-4381. Web: [www.rollemusa.com/mail](http://www.rollemusa.com/mail).

**MAILSTREAM:** Print, finish, and mail 10-in-one. Mailstream, a new direct mail finishing system, converts press sheets to finished mail products while maintaining zip code order. Apply 10 processes in one operation including hot, cold and fugitive glue; tear-off coupons; tip-on cards; trimming, slitting, scoring, pattern-perforations, and scratch-off labels. Mail integrity is maintained creating folded, glued products ready for delivery to mail bins. Glue closures meet USPS requirements and eliminate the need



**Two-Up Trifold Mailer**

for wafer seals. In-line and near-Line configurations available.

**CONTACT:** For more information, call 800-272-4381 or click [www.rollemusa.com/mail](http://www.rollemusa.com/mail).