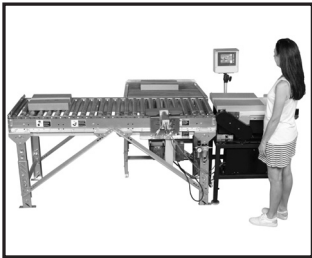


§ Advanced Poly-Packaging, Inc.

CATEGORY: Parcel Mailing/Sorting Systems

PRODUCT: US-6000 Check-Weigh; BF-4000 Box Filling System

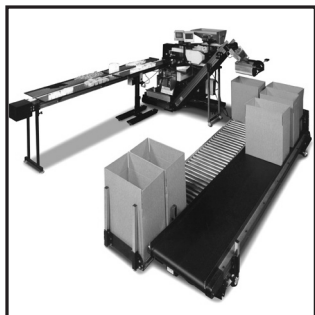
COMPANY: Advanced Poly-Packaging, Inc., 1331 Emmitt Road, Akron, OH 44306. Key Contact: Paul Orosz. Phone: 800-754-4403. Email: sales@advancedpoly.com.



US-6000 Carton Check-Weigh

the desired weight to the gravity reject roller conveyor. The belt and roller conveyors can be customized.

DESCRIPTION: Accurate shipping weight is the final checklist item before your package is sent to its destination. Our check-weight system is accurate within 5 grams. It is designed for cartons 3" x 3" to 18" x 24" and weighing up to 50 lbs. that are typically fed from a box taper. The package is weighed, then fed onto a roller. A pusher assembly pushes the carton that does not meet



BF-4000 Box Filling System

carton is fed into the loading position.

BF-4000 BOX FILLING SYSTEM: This side-by-side automatic box filling system takes pre-made boxes and feeds them from a belt conveyor onto a loading station. Once filled, they are released on a return roller conveyor. The BF-4000 easily ties in with other infeed equipment such as conveyors, bagging machinery and rotary scales. When a carton is full, an accumulator closes above the carton allowing continuous feeding, while the next empty

CONTACT: For more information, call 800-754-4403 or email sales@advancedpoly.com.

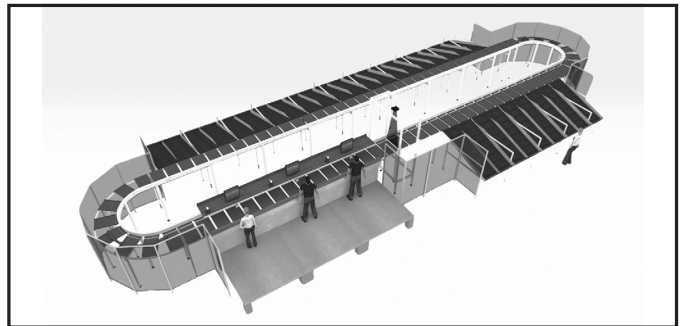
§ BÖWE SYSTEC North America Inc.

CATEGORY: Parcel Mailing/Sorting Systems

PRODUCT: Optimus Sorters; OptiSorter

COMPANY: BÖWE SYSTEC North America Inc., 8480 Honeycutt Rd, Ste 200, Raleigh, NC 27615, (919) 714-7277 or email address: Generalinquiries@bowesystecinc.com

DESCRIPTION: BÖWE SYSTEC's New Optimus Parcel and Package Sorting solutions address the complexities and demanding requirements of the package, parcel and logistics sector with material handling automation, weighing, scanning, dimensioning, print/apply labeling and sorting for a variety of industries including, Postal and Parcel sortation and Inbound/Outbound logistics. The solutions are designed to handle a wide variety of product types and dimensions with systems that are fast, flexible and scalable to match operational objectives. The unique tray and pusher technology is designed for sorting a large range of different product sizes and shapes including parcels, poly bags, cartons, books, multimedia, containers, apparel, shoes, and agricultural items. It enables the sortation of items as small as 1/16" thick and as large as 65 lbs. with speeds of up to 15,000 trays per hour.



BÖWE SYSTEC Optimus Sorters

FEATURES: The modular design allows for customized sorter layouts to optimize floor space and workflows including elliptical and straight-line, single and multi-level, and dog leg configurations. The number of chutes is unlimited with multi-directional sortation available to minimize floor space requirements. The sorters are available with manual and automatic induction to maximize productivity and the robust BÖWE Sort software platform for inbound inventory management as well as outbound order fulfillment, tracking and parcel co-mingling. A variety of chute designs are available to sort directly into gaylords, carts and bags or efficiently for palletizing and order fulfillment. The flexible designs are competitively priced, translating into an immediate return on investment by saving labor, saving time and increasing accuracy.

OPTISORTER: BÖWE SYSTEC OptiSorter is a highly versatile packet and parcel sorter that also has the ability to process brochures, catalogues and poly bags. The OptiSorter can incorporate inline features as required: BCR and OCR reading, weighing, volumizing and labeling to increase operational capacity and improved operational efficiencies. The OptiSorter sorting system is an integrated solution consisting of push tray sorter technology complemented by BÖWE Sort software solution. Key features of the OptiSorter is the system's versatility and ability to process all mail formats up to 31.5 kg in weight including parcels, packets and Flats. Available in a wide range of configurations carousel, vertical, horizontal, dog leg or multilevel to meet operational and space constraints in line with business needs. The OptiSorter can process up to 18,000 trays per hour with noise levels less than <70db.

CONTACT: For more information, contact BÖWE SYSTEC North America at (919) 714 7277 or Generalinquiries@bowesystecinc.com

§ Engineering Innovation Inc.

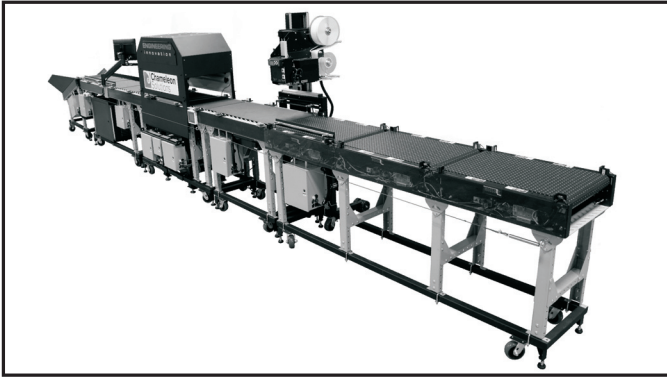
CATEGORIES: Parcel Mailing/Sorting Systems

PRODUCTS: EZ-WorkDesk; EZ-Flats; The Champ / Super Champ; Chameleon; EZ-Letters; LightSort

COMPANY: Engineering Innovation Inc. (Eii), 3601 Sagamore Parkway N, Suite Eii, Lafayette, IN 47904 Contact: sales@eii-online.com, Phone: 800-350-6450

EZ-WORKDESK SYSTEM DESCRIPTION: The EZ-WorkDesk is geared for automated parcel processing – featuring IMpb (Intelligent Mail Package Barcode) compliance, an OCR, and laser dimensioning. This versatile mailroom application is the most cost effective solution for rapid induction into the USPS package shipping network. Features include: OCR technology enables rapid Intelligent Mail Package Barcode (IMpb) production for new USPS specifications; Configurable Wide Area Bar Code Reader captures up to five separate barcodes on a single package; Dimensioning feature captures length, width, and height for USPS packages and other Dimensioning requirements. Leveraging its industry

Parcel Mailing/Sorting Systems



Engineering Innovation's Chameleon Parcel-Processing Solution

leading technology for “reading” mail piece information, the EZ-WorkDesk Parcel Processor features best of class capability for collecting package information. Data from the four key package characteristics – address, dimensions, barcode intelligence, and weight – are pulled off the package simultaneously. The Software immediately interprets package data set for labeling, routing, postal documentation, and customer billing.

EZ-WORKDESK FEATURES: The EZ-WorkDesk Rapid Parcel Processor enables USPS package processing for several key “single-piece” classes: Priority Mail, Cubic, First Class Packages, Bound Printed Matter Parcels, Parcel Select, Media Mail, and Library Mail. Presort manifesting upgrade capabilities include: Parcel Select Lightweight, Marketing Parcels, Bound Printed Matter Parcels, and First Class, Standard, & BPM Flats.

EZ-FLATS SYSTEM DESCRIPTION: Take advantage of weight based discounts on First Class Flats with an EZ-Flats™ Manifesting system from Eii. The EZ-Flats™ System features a revolutionary sorting methodology for processing flats and obtaining Automation discounts using a single machine pass. The MLOCR-based solution produces a bundle-based Automation First Class mailing at only a fraction of the cost of traditional flats sorting machines. The system provides rapid sorting capability to the 5D automation discount level, enabling mailers to achieve higher profitability on small or large flats mailings. Designed as a Manifest Mailing System (MMS), the EZ-Flats™ System eliminates the need for a meter as it processes mixed-weight flats. When the mail piece is weighed and read by the OCR, a mailing label is produced for application on the piece’s upper right corner. The label features the permit indicia along with the 11-digit barcode, a unique piece ID, and several proprietary sort codes to expedite sorting for automation discounts. The EZ-Flats™ concept combines automation with people to work more efficiently than other flats sorting technologies, especially for producing bundle-based automation mailings. Central to the EZ-Flats™ Manifesting Systems approach to sorting mail is the inclusion of L-shaped Sorting Territories which are ergonomically designed with 40 bins each for quick sorting to ADC, 3D, and 5D destinations. In addition to First Class Automation/Presort Flats, the EZ-Flats™ Manifesting System processes First Class Package Services, Standard Class and Bound Printed Matter Flats, and Parcels and Priority Mail.

Low Volume Configuration: EZ-Flats™ Essential Manifesting System:

The introductory model for the EZ-Flats™ System, Essential, is geared for daily runs of 500-2000 flats. This version enables mailers with lower flats volumes to achieve high levels of profitability with a low initial capital outlay. As volumes increase, users can directly upgrade to the Enhanced or Premium models, as described below. The Essential solution features best-of-class OCR technology and works with Parascript™ and/or RAF Platinum™. Its server-based configuration enables several

machines to work in parallel for processing higher volumes. The system installs easily in an afternoon and operators are up to speed in 15 minutes. A touch screen monitor provides easy access to both workstation computer and server. The system also includes label printer and barcode scanner for automatic customer chargeback.

Medium Volume Configuration: EZ-Flats™ Enhanced Manifesting System:

Designed for daily flats volumes in the 2000-4000 range, Enhanced utilizes the same workstation as Essential but adds Engineering Innovation’s Dynamic Sort software/sorting technique. At the heart of the EZ-Flats™ process is the elimination of secondary passes even when sorting to the 5D level with bundle-based mailings (Note: bundle based mailings achieve much higher discount levels as they only require ten mail pieces to achieve the automated discount level, versus the 90 required for tray-based preparation). Utilizing a patented technology, Dynamic Sort identifies the tenth piece the instant it is read by the OCR and then dynamically reassigns a routing designation for the maximum discount. This greatly reduces the amount of time required to finalize the mailing at the end of the day’s run. In addition, Dynamic Sort provides a roadmap for correctly packaging the mail to meet USPS requirements.

High Volume Configuration: EZ Flats™ Premium Manifesting System:

Premium is the EZ-Flats™ full processing system and is used by mailers with higher daily flats volumes (3000 and up). Premium ships with the Dynamic Sort software and adds automation with a label applicator, conveyor, and eight automated pockets (expandable for quick kills on higher-volume runs). The system can process at a rate of up to 2000 flats per hour.

Parcels Configuration: EZ-Flats™ Pro Parcel Manifesting System:

Expanding upon the success of our original sorting solution, Engineering Innovation has introduced the EZ-Flats™ Pro. It’s not just for sorting flats anymore! Eii has combined the functionality of the EZ-Flats™ Premium with The Champ making sorting parcels even more affordable. This system features a revolutionary sorting methodology for processing packages and obtaining the highest Automation discounts with a single pass. Expanding upon the benefits of the EZ-Flats™ Premium it combines automation with a label applicator and conveyor with the ability to sort into postal bags. Sort, manifest, and bill parcels up to 15” in height with a single machine.

THE CHAMP & SUPER CHAMP SYSTEM DESCRIPTIONS: Building on nearly 30 years of direct mailroom experience, The Champ Mail Processor empowers mailers to maximize postage savings on the variety of parcels common to mail processing centers, including ALL types of USPS Priority Mail. The manifest mailing system utilizes differential weighing to enable rapid handling of multiple types of mixed-weight mail simultaneously.

THE CHAMP & SUPER CHAMP SYSTEM FEATURES: The tabletop mail manifesting system is IMpb-compliant across the range of USPS Commercial Parcels, handling not only all types of Priority Mail but also First Class Packages, Bound Printed Matter, Parcel Select, Parcel Select Lightweight and Media/ Library Mail. The Super Champ upgrade enables quick address validation with IMpb compliance by harnessing the power of the ergonomically friendly mobile OCR ring scanner that scans the address on the mail piece for USPS delivery point validation.

CHAMELEON SYSTEM DESCRIPTION: The Chameleon Parcel-Processing Solution is a modular, portable and workflow-flexible platform that Eii designed to adapt to any parcel-processing environment. Making automation cost-effective for rapidly growing parcel-processing operations, the Chameleon Solution is fully adaptable, providing custom-

Parcel Mailing/Sorting Systems

izable options such as barcode reading, OCR, weighting, dimensioning, RFID capabilities, label application and sort speeds to meet your process and budget.

CHAMELEON FEATURES: Key Chameleon capabilities include: Simultaneous weighing, dimensioning, barcoding and OCR reading; Multi-purpose OCR reads the address for manifesting, barcoding, tracking, and proof of processing; Flexibility to capture address block, barcodes, and weights; Scale detects and sorts parcel weights up to 132 lbs; Handles packages as large as 35" x 30" x 25"; Process boxes, padded envelopes, or poly bags; Speed ranges from 1,000 to 7,500 parcels an hour; Outputs a unique mailing label featuring postal barcode, unique piece ID, proprietary sorting/routing codes, and other business information; Apply labels automatically on the fly, semi-automatically with label assist.

EZ-LETTERS SYSTEM DESCRIPTION: Eliminate your postage meter – Apply postage, barcode, capture automation discounts, and sort in one pass with the EZ-Letters Sorting Solution from Engineering Innovation Inc. In keeping with its mission to offer the mailing industry affordable solutions that maximize postage savings, Engineering Innovation, Inc. introduced the EZ-Letters solution in 2010. With a throughput of up to 18,000 letters per hour, the multi-functional EZ-Letters Sorting Solution has all the capabilities of larger letter sorters at a fraction of the cost and size. With very low cost of entry and the smallest footprint of any letter sorter on the market, the EZ-Letters solution is designed to deliver immediate efficiencies to small and large mailrooms alike. Able to handle metered mail, permit mail, and manifest mail, this versatile solution features an OCR that can read letters for Automation discounts, while providing mailers the option to go for MADC through 5D discounts selectively. Processing First Class and Standard mail, EZ-Letters capabilities encompass a broad range of typical business needs, including transactional, office, and promotional mail. In addition, EZ-Letters offers solutions for Incoming Mail, International Mail, Vote by Mail, and can even processes Reject Mail from other sorting equipment with its best-of-class imaging/recognition capabilities.

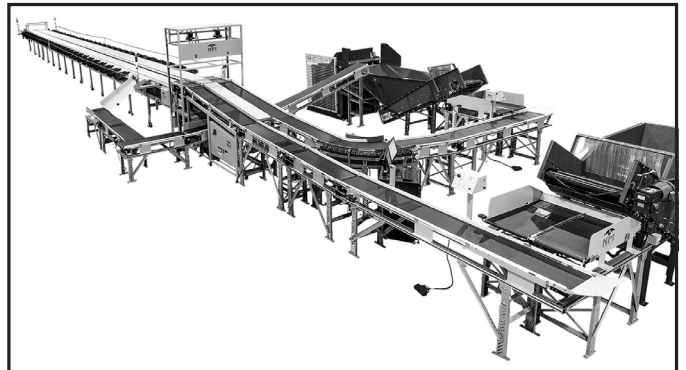
EZ-LETTERS FEATURES: Key EZ-Letters features include the optional Weigh on the Fly Scale and HP cartridge-based high-speed printer for printing postal barcodes, indicia, addresses, and sorting codes. Coupled with its manifesting capability, mailers can dramatically lower labor, equipment, and ink costs while combining posting/processing into a single-step routine. Before postage savings, EII estimates this process will bring as much as a 5-cent reduction in per piece mailing costs. EZ-Letters is available with Parascript™ OCR which enables reading handwritten pieces and the optional RAF Platinum™ OCR for best in class performance. EZ-Letters is also outfitted with a Wide Area Bar Code Reader which reads up to five distinct barcodes on the mail piece for such applications as tracking, proof of processing and populating the Intelligent Mail Barcode. A UMOVE™ upgrade is also provided for mailers who need to be in compliance for Move Update. The EZ-Letters processing platform is highly scalable. The “out-of-the-box” unit, at a mere 3x5 feet, can fit through most doors and into any room. Single-sided stackers allow the machine to be set up against a wall to fit into the tightest mail room.

LIGHTSORT: The LightSort Sorting System easily integrates into existing processes using light technology for expedited processing. Our low-cost systems quickly improve accuracy, productivity, and data tracking. LightSort Technology is used on fixtures that are low maintenance, durable, and easy to move for reconfiguration and storage. Quick assembly and intuitive use has operators up to speed in no time so they can efficiently sort or fill orders and track data using the hands-free ring scanner. With LightSort, Eii proves again that expensive automation is not always the optimal approach. LightSort Technology leverages low cost equipment to help operators do their job more quickly with greatly reduced errors.

LIGHTSORT FEATURES: The LightSort Sort-to-Light uses a modular sorting rack with easily programmable destinations. Sort lightweight parcels and poly bags in the Sort-to-Light for induction to the U.S. Postal Service. LightSort Sort-to-Light features a wireless ring scanner that’s integral to the solution’s success. It allows for hands-free operation and barcodes can be sorted from any angle. When the sorter scans the package barcode, the correct bin destination lights up. This eliminates guesswork so sorters can get the package to the right location every time. Up to ten bags can be preloaded into each location. When a bag is full, the operator can quickly unhook it, push it out the back or pull it out the front and lift the next one into place.

New in 2018, the LightSort Pick-To-Light and LightSort Put-to-Light are helping combat the need for even more streamlined order fulfillment. With Pick-to-Light technology, Bin locations house merchandise that can be quickly retrieved for an order. Pickers scan the order sheet and the closest SKU locations lights up. After the merchandise is pulled, a barcode for the bin location is scanned; the light for that location switches off, and the next location lights up. Use print on demand to label the order when complete. Outfit the racks with dual or triple light displays with different colors to accommodate various workflows and processes. With Put-to-Light technology each bin location represents an order. SKUs retrieved from inventory are scanned into lighted bin locations to complete the order, and operators use print on demand to label orders.

CONTACT: For more information call 1-800-350-6450 or email sales@eii-online.com.



NPI XStream

§ NPI

CATEGORY: Parcel Mailing/Sorting Systems

PRODUCT: NPI Sorters

COMPANY: NPI, 14901 Trinity Blvd, Fort Worth, TX 76155. Key Contact: Michelle Ramirez. Phone: 214-634-2288 or 888-821-SORT.

XSTREAM: The XStream has the ability to sort flats and parcels of up to 70 lbs. to different bin destinations such as tubs, sacks and gondolas. With its ergonomic design, the XStream is perfect for any processing environment. The XStream has a throughput of up to 30,000 flats/parcels per hour.

XSTREAM FEATURES: The Xstream is compact and scalable and can be used for inbound and outbound processing. It features multi-sided omni-directional barcode reading capability for most 1D, 2D and Postal barcode types. It can handle a wide variety of product sizes, shapes and weights and integrates with existing conveyor systems.

CONTACT: For more information, call 888-821-SORT or email sales@npisorters.com.